

Giant Scale Radio Controlled Model Aircraft Air Show

30 August – 1 September

➤ Thursday, August 29

7:00 a.m. – 8:00 p.m.

Main Museum Gates open. Pilots and vendors **only** are permitted on runway/venue area. Please follow red arrows to the venue area and show this map to staff at entrance to the runway area. Upon arrival, please check in at the Registration Tent, located on the Venue grounds. Parking passes will be issued at this time. **Participants only will be permitted to enter the venue area.**

6:00 p.m. – 11:00 p.m.

Main Museum Gate opened and monitored for overnight campers only. **Vehicle passes are required to re-enter Museum grounds. Gates will close promptly at 11:00 p.m.** Staff security will be on the grounds overnight.

➤ Friday, August 30 and Saturday, August 31

7:00 a.m. – 6:00 p.m.

Main Museum Gates open. **Follow yellow arrows to Event Venue.** Event venue closes at 4:00 p.m.; Museum open to the public until 5:00 p.m. Museum grounds cleared at 6:00 p.m.; main gate monitored by Museum security.

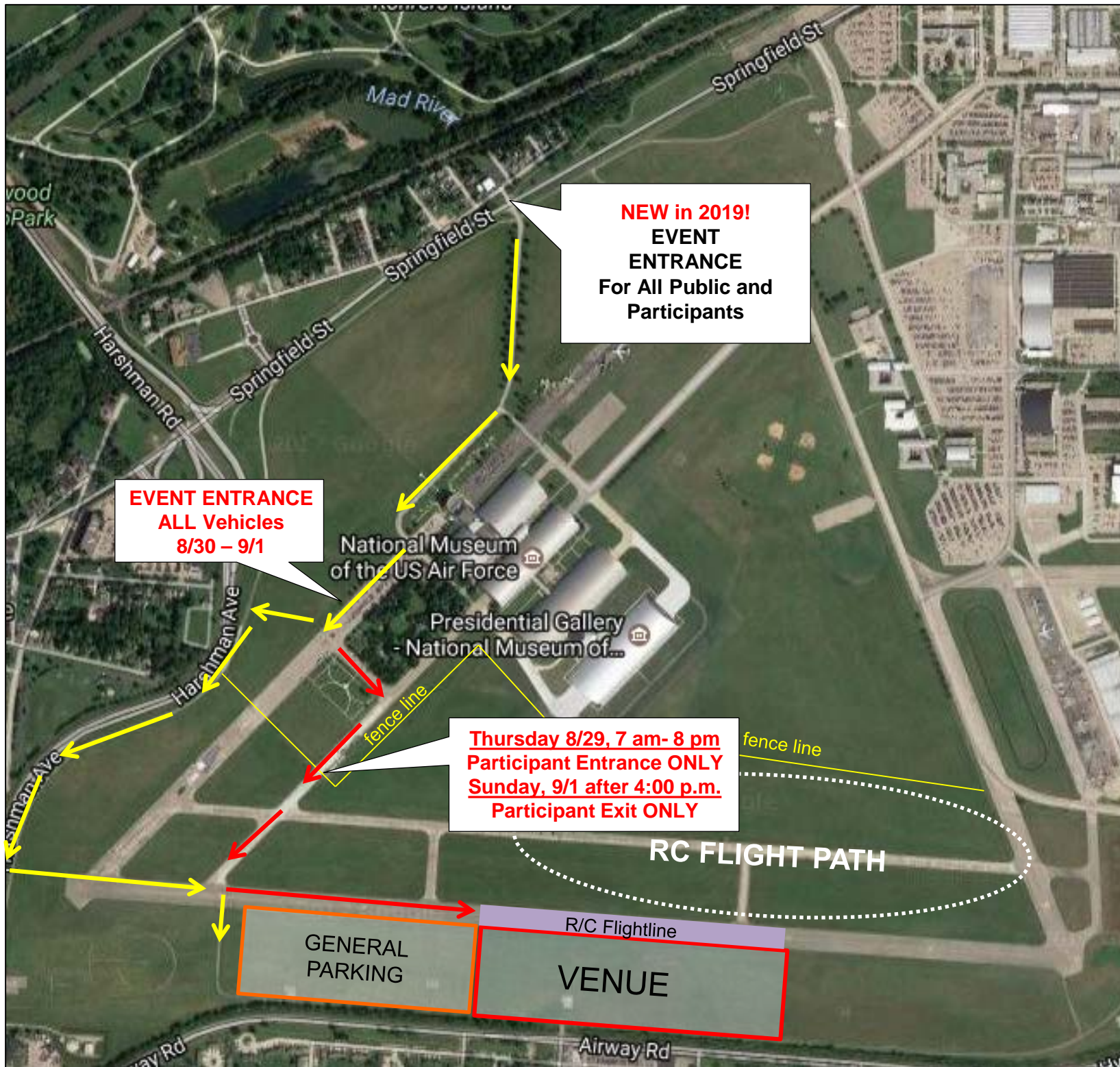
6:00 p.m. – 11:00 p.m.

Main Museum Gate opened and monitored for overnight campers only. **Vehicle passes are required to re-enter Museum grounds. Gates will close promptly at 11:00 p.m.** Staff security will be on the grounds overnight.

➤ Sunday, September 1

7:00 a.m. – 6:00 p.m.

Main Museum Gates open. **Follow yellow arrows to Event Venue.** Event venue closes at 4:00 p.m.; Museum open to the public until 5:00 p.m. Museum grounds cleared at 6:00 p.m. **No overnight camping is permitted on Sunday, September 1.**



Gravel Driveway

Gravel Driveway



Fire Lane

Fire Lane

Participant Overnight Camping (Permit Only)

Concrete Pad/
Motorcycle
Parking/
Port-a-johns

Trash

Port-a-johns

Vendor Area

Vendor Area

20x40

20x40

Food Tent/Truck Area

20x40

Scamper

Staff/Volunteer/Participant Parking Area

DV/Reserved Public Parking →

RV Line

RV Line

RV Line

RV Line

Pilot Trailers

Walkway 2

Walkway 2 Public Entrance →

Pilot Tents

10x10

Hospitality

110'

Medic

10x10

Info/Command Post
10x15

Hospitality

Pilot Tents

10x10

Walkway 1

Walkway 1 Public Entrance →

Bleachers

Bleachers

Bleachers

15x15

PA Tent Registration

Fence Line

Fence Line

Show Center Line

Show Center Line

SC

Runway 150' wide